

SEA

Southern Edge Arts

Annual Report

2021



Southern Edge Arts Incorporated

Thank you to our 2021 sponsors and supporters:



Department of Local Government, Sport and Cultural Industries
Department of Primary Industries and Regional Development

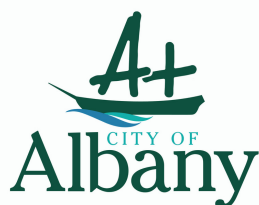


Table of Contents

2 Chairperson Report

3 Artistic Director Report

5 2021 SEA Staffing

6 SEA 2021 Program

- Act Belong Commit Arts Workshops
- Act Belong Commit Community projects
- Act Belong Commit Youth Devised Performance season

11 2021 Special Projects

- The Ballad of Penelope and Marlin
- Re Grow / The Tanks

13 Financial Report

Chairperson Report

It is a pleasure to reflect on my second year as Southern Edge Arts Chairperson in the 2021 Annual Report with our organisation's amazing achievements.

Southern Edge Arts major achievement presenting of The Ballad of Penelope and Marlin, an entirely original production from Great Southern Artists in a near sell-out season was a privilege to be involved in and heart-felt congratulations to production team, cast and crew! Continuing to deliver an on-going variety of workshops and the Living on the Edge festival provides amazing opportunities for our members to grow and develop skills that will take them through all aspects of their lives ahead – the wellbeing to Act, Belong and Commit!

Under the guidance of Artistic Director Anne, General Manager Megan, and Lead Circus Tutor, Cassy, the staff and tutors continued to successfully steer our organisation through contemporary performance and training even amid Covid regulations and the SEA Board of Management enjoys supporting all your efforts. I am proud to be Chairperson of Southern Edge Arts and grateful for the assistance I have in the role.

The Board continues to provide governance to assist SEA's operating team, considering the best interests of our members and continuance of our organisation.

Thanks to Iain Marshall as Deputy Chair, bringing many years' experience of community service that I have called on for advice and insight. SEA is indebted to Linda Taylor for stepping into the Treasurer's role, providing diligent governance and assistance for SEA. Jasmine Reeves has continued to provide youth representation and it has been wonderful to welcome and work with our new Board member Clair Trainor. During the year, we farewelled Sofie Lines and thank Sofie for her role on the Board. I extend a sincere thank you to resigning member Annette Stewart who stayed on the Board for an additional year, helping us through to the next stage as an experienced and valued SEA Board member since 2019.

This year, we will continue our new tradition to celebrate SEA at the AGM, a great chance to mingle with other members, meet the Board and thank our hard working staff.

All our Board members' service is voluntary and notwithstanding juggling our other commitments, on behalf of new and returning Board members, we are enthusiastic to contribute towards Southern Edge Arts, our members, artists and contemporary performance in our region for creative and exciting years ahead.



Natalie Reeves
Southern Edge Arts Chairperson

Artistic Director Report

As we emerged from the isolation and uncertainty of 2020, SEA returned to delivering arts activities in 2021 that create a sense of connection and community and encourage people to consider the world around them and how they can contribute towards change.

2021 was the perfect year to present The Ballad of Penelope and Marlin. A play that demonstrated the power and prophetic nature of the arts. Written in 2016, the action of the play was set inside a 'hive' where people lived because the outside world was uninhabitable. It sounds a lot like lockdown, but it was wildly more fun and musical.

Our highly successful two week season of The Ballad of Penelope and Marlin, at the newly refurbished Albany Town Hall, allowed us to employ a number of regional artists and more importantly, a number of young people. It excites me that later down the track when these youth are asked the question "What was your first job?" they will be able to say "Performing Artist."

Covid hasn't been the only struggle our community has faced in the last year. Housing and homelessness has become a big issue. In 2021 we decided to highlight the reality of young people couch surfing and being at risk of homelessness by creating conversations through arts activities. The Tanks was a large scale artist in residence project that highlighted homelessness, connection to community and access, particularly for minority populations with our community.

Our Living on the Edge Festival of Youth Performing Arts returned with an exciting program of youth devised performances highlighting the creativity and talent of our participants. Blank Canvas and He@rd were our mainstage productions and showcased our professional approach to contemporary performance making.

We are passionate advocates for the health and wellbeing benefits of the arts and how the arts contribute to being part of a creative community. The Healthway Act Belong Commit message is something we embody, not just promote. Keeping people engaged with SEA through our projects and programs, contributes towards a greater sense of community and offers support to young people. The last couple of years have proven how important it is for us to stay engaged, connected and committed to the arts and cultural life for the benefit of ourselves and our community.

Anne Sorenson
Artistic Director





2021 SEA Staff & Artists

SEA provides regular casual and part time employment to artists living in the Great Southern Region as well as contracting local artists for projects. All our staff are professional artists, teachers, performers or arts administrators who are committed to inspiring and supporting emerging artists in regional WA.

Board of Management

Chairperson – Natalie Reeves
Vice Chairperson – Iain Marshall
Treasurer – Linda Taylor
Secretary – Sofie Lines
Board Members – Clair Trainor
Annette Stewart
Jasmine Reeves

Tutors

Tristan Maitland – Circus Tutor
Wattle Broun Jack – Circus & Aerials Tutor
Zak Launay – Street Acro Tutor
Anne Sorenson – Theatre Tutor
Nelson Blake Gilmour – Theatre Tutor
Jodie Sexton – Circus Artist
Megan McDougall – Aerial Assistant
Jorja Whitehurst – Aerial Assistant

Volunteer Assistants

Alex Wiehl
Adelie Bew
Jorja Whitehurst
Luke Pascoe
Isabelle Cameron
Nina Giuntoli
Erin McCahon
Meg Furphy
Jasmine Reeves
Kore Ford

Guest Artists

Splash Test Dummies – Melbourne
Ella, Yuck Circus – Perth
Dr Allan Hancock – Perth

Executive and Admin Team

Artistic Director – Anne Sorenson
General Manager – Megan Turpin
Lead Creative Capacity Tutor – Cassy Turner

Artists

Nelson Blake Gilmour – Penelope & Marlin
David Rastrick – Penelope & Marlin
Annette Carmichael – Penelope & Marlin
Serena McLaughlan – Penelope & Marlin/Tanks
Rachael Colmer – Penelope & Marlin
Sarahflo Hunter – Penelope & Marlin
Tahlia Robinson-Solczaniuk – Penelope & Marlin
Luke Pascoe – Penelope & Marlin
Katherine Alice Cleary – Penelope & Marlin/LoTE
Don Anderson – Penelope & Marlin
Jasmine Reeves – Penelope & Marlin
Imogen Taylor – Penelope & Marlin
Lena Grayson – Penelope & Marlin
Dakota Green – Penelope & Marlin
Campbell Creswick – Penelope & Marlin/LoTE
Jack Harrison – Penelope & Marlin
Triska Lehane – Penelope & Marlin
John Carberry – Penelope & Marlin
Jill O'Meehan – The Tanks
Tracey Margetts – The Tanks
Bob Symons – The Tanks
Lincoln Cook – The Tanks
Luke Simpson – Living on the Edge
Wendy Wright – Penelope & Marlin
Terrell Lacey – Penelope & Marlin
Acarander Huntley – Penelope & Marlin
Gloria Shackelton – Penelope & Marlin
Emily O'Brien – Penelope & Marlin

SEA 2021 Program

Act Belong Commit Arts Workshops

SEA's performing arts skills development workshops are at the heart of what we do. Growing the next generation of artists through circus and theatre arts is important to sustaining arts in regional WA. Our sponsorship from Healthway allows us to support the physical and mental health of young people in our community through our after school arts workshops, delivered on site across four days a week.

These workshops average about 765 participants a year and employ a number of teaching artists and young assistants throughout the year.

2022 Workshops

Aerials 1 Jnr

Aerials 2 Snr

Aerials 2

Aerials 3

Aerials for Performance

Smircus

Little Squircus

Circus Big Top

Circus Big Top 2

CircaSEA Troupe

Actors Club

Theatre Ensemble

Street Acro Jnr

Street Acro Int

Street Acro Snr

Total participants

Term 1: **175**

Term 2: **199**

Term 3: **205**

Term 4: **185**



Adult Aerials Workshops

80 participants across 4 terms

Targeting older youth and enthusiastic over 18s, Adult aerials has become a popular addition to our timetable. Run on Monday nights in 6 week blocks, parents, former students and other community members are offered a beginners and intermediate level class to build their strength, encourage community and learn new skills.

School Holiday Workshops

We have created a school holiday class that appeals to our target audiences and has been successful in attracting new enrolments. Have a go Circus workshops offer participants a chance to engage with multiple activities and try their hand at what we offer.

Have a go circus workshops
Delivered 5 – 162 participants

Circus Workshop
Delivered 2 – 31 participants

Act Belong Commit Community Arts Projects

Creating community and building connection through the arts is the outcome of our Community Arts Program. Bringing high quality arts experiences to the Great Southern through outreach classes, performances at festivals and events. This program not only increases access to the arts for regional youth, but often increases enrolments in our workshop program.

Australia Day activities at Middleton Beach Festival

Middleton Beach festival is becoming a regular event for SEA. This year we ran a hula fit workshop for all ages to participate in.

Outreach Programs

SEA has a long history of sharing our skills with children and youth who can't make it to our workshops. We provide outreach workshops to schools, After School Care, Community Resource Centres and libraries. Circus is definitely the most requested, but we also offer theatre, arts and other activities as requested.

15 outreaches

Albany OSHC, Tambellup CRC, Mt Barker Library, School Camp, Fairies at Mt Barker community day.

ReGrow

Re Grow were community arts workshops held at Fossickers tipshop where we and invited participants to create a soft sculpture pieces about regeneration and bountiful gardens, re growing from an artistic garden bed, which was an old mattress. These workshops were part of The Tanks artist in residence program using arts to explore homelessness.



Act Belong Commit Youth Devised Performance Season

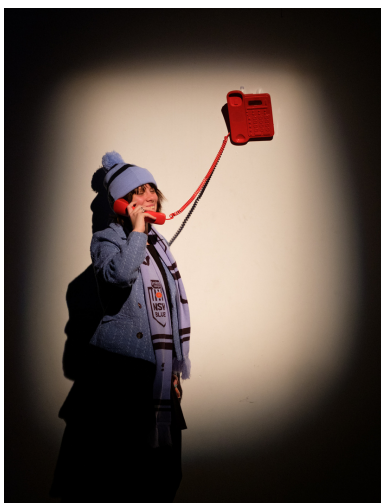
Living on the Edge, Youth Performing Arts Festival

In 2021 we were again lucky enough to deliver our popular Living on the Edge Festival of Youth Performing Arts. This festival is a month where our more experienced troupe classes/ensembles of young performers showcase the works they have created. This year was no exception when it came to talent, innovation and contemporary performances with two main stage shows, HE@RD and Blank Canvas being presented and well received by audiences.

HE@RD



He@rd was this years offering from SEA's Theatre Ensemble. Directed by theatre director Nelson Blake, He@rd used innovative staging and multimedia to highlight modern settings of power. With live video feeds, web cams and projections, He@rd reminded us of the ways information and power can influence our civic engagement and highlighted how the dynamics in relationships can contribute to this.



Blank Canvas

SEA's highly skilled aerial artists and acrobats created colour and vibrancy in their show Blank Canvas. Performing on trapeze, lyra, silks and the cloud swing, the aerialists were complemented with handstands, juggling and group acro routines. Blank Canvas showcased the creativity and ideas of the next generation of circus artists in WA.



End of Term Showcases

To support the development of confidence in performing, we offer a gentle opportunity for workshop participants to share their skills with parents and friends, via end of term in house showcases. In 2021 SEA presenting 12 in house showcases in Aerials, Circus and Drama.



Town Hall Relaunch Festival

In 2021 The City of Albany Arts & Culture reopened the newly refurbished Albany Town Hall. SEA was invited to part of the relaunch festival, presenting two aerials performances and pop-up workshops as well as the presentation of "View from the Magpie's Nest" which was the performance outcome of a partnership with Breaksea, exploring young people's mental health struggles in a dramatic roving presentation.



Maritime Festival - Fire Performance

The inaugural City of Albany's Maritime Festival was held at the Albany Boatshed Markets in July. SEA and fire flow artist Lena Grayson partnered with the Elleker Bush Fire Brigade to present a fire performance during one night of the festival.



SEA 2021 Special Projects

The Ballad of Penelope & Marlin



Does art imitate or create?

In 2016 a team of Great Southern Artists gathered at the Vancouver Arts Centre to imagine how life would be in 50 years time. The Futures Project was a City of Albany collaborative script writing residency that resulted in a contemporary musical theatre script titled, *The Ballad of Penelope and Marlin*.

Five years later, Southern Edge Arts employed a team of Great Southern performing artists to stage the premiere production at the Albany Town Hall in July 2021.

The Ballad of Penelope and Marlin was a comical look at life in future lockdown, where robot bees tend to your needs and love begins with an upgrade. Marlin is the last in a long line of fishermen. With no fish left in the oceans, he reluctantly enters Harmony Hive and meets Penelope, a future star, who disrupts the hive with a start up like no other. This exclusively Great Southern musical is about hope, desire and a hive that is home to humans and the last living bee.

With a creative team of recognisable Great Southern Artists that included David Rastrick, Annette Carmichael, Anne Sorenson, Serena McLauchlan and Nelson Blake, *The Ballad of Penelope and Marlin* was a memorable night of theatre in the newly renovated Albany Town Hall.

Starring familiar faces from the Albany music and theatre scene including Rachael Colmer, Tahlia Robinson-Solczaniuk, Katherine Anne Cleary, Sarahflo Hunter and introducing Luke Pascoe as Marlin, the performance included live music performed by David Rastrick. The Ballad of Penelope and Marlin was billed as an M rated show and cast adults and mature young people in the roles.

Funded through the Department of Local Government Sport and Cultural Industries WA Theatre Development Initiative, this project provided welcomed employment for professional artists in this region and showcased the versatility of the Albany Town hall as a performance space. As part of the Albany Maritime festival, The Ballad of Penelope and Marlin opened it's two week season on the 8th July and sold out 7 of its 8 performances.



The Tanks

The Tanks Project aimed to provide a place for positive expression and use the arts to create a safe space for community members to explore the risks associated with homelessness and the role of connection and culture to create hope. The Tanks used contemporary art as a vehicle for change and the creation of public artworks that are meaningful to the community.

The residencies were held between October 2021 and January 2022 in Albany and Denmark. The residencies were delivered with the support of community partners, Albany Youth Support Service, Denmark Arts, The City of Albany, Ace Camera Club, Albany Artability.

Tracey Margets worked with people in the community who identify as having a disability, Her work used urban art styles as an influence to explore "connection"

Bob Symons and Lincoln Cook worked with a group of people who identify as having a

disability and were learning photography at the ACE camera club. They explored the concept of feeling at home in the community, and being seen and noticed.

Serena McLauchlan and Jill O'Meehan worked with youth, families and children to create soft sculptural pieces using mattresses as the canvas. They focused on homelessness and sleeping rough.

An Exhibition of the work will be presented in 2022.



Financial Report

23rd June 2022

The Committee of Management
Southern Edge Arts Incorporated
77 Sanford Road
ALBANY WA 6330

By Email Only: admin@southernedge.org.au

Dear Committee

SOUTHERN EDGE ARTS INCORPORATED
AUDIT MANAGEMENT REPORT
FOR THE YEAR ENDED 31 DECEMBER 2021

We have now completed our audit, for the year months ended 31 December 2021, and attached is our Audit Report and Independence Declaration, included with the financial statements prepared for audit.

As noted in our engagement letter, because of the inherent limitations of an audit, together with the inherent limitations of any system of internal control, there is an unavoidable risk that some material misstatements may not be detected, even though the audit is properly planned and performed in accordance with Australian Auditing Standards.

During the course of our audit we did not note any areas where improvement may be made which would enhance the level of internal control.

LIMITATION OF INTERNAL CONTROL

Similar to other commercial trading enterprises, we bring to the Committee's attention that there does exist generic and inherent accounting internal control risks that fraud and errors may remain undetected. Due to economic constraints and the nature of operations there are generic and inherent limitations to internal control procedures which can be applied. Those limitations, include (but are by no means limited to):

- ▶ Separation of Duties (particularly within the bank reconciliation / general journal / invoicing / receipting / payment / payroll and authorised signatory (electronic password) functions).
- ▶ Accounting Software (integration, password and processing limitations).
- ▶ The possibility of collusion.
- ▶ Our external audit only sample tests transactions and relies on results of systems testing for audit assurance.

Consequently there is an inherent reliance on the honesty and integrity of staff. This matter is brought to the Committee's attention to highlight the importance of their role in financial review and oversight to be wary of the possibility that fraud and errors may exist.

Long Service Leave

An accrual has been made for staff annual leave entitlements presently due, however no provision has been made for long service leave entitlements. I understand that there is no present obligation to pay long service leave until 7 years of service, at which time there is a pro rata entitlement. The WA Long Service Leave Act entitlement is 8.667 weeks for every ten years service completed. However, accounting standards require matching of any expense with the accounting period in which an employee completes their service. By accruing employee entitlement from the beginning of an employees service period the Centre will avoid the large expense being recognised on the 7 year anniversary when a present entitlement is established.



LIABILITY LIMITED BY A SCHEME APPROVED UNDER PROFESSIONAL STANDARDS LEGISLATION
Macleod Corporation Pty Ltd is a CPA practice

Page 1 of 2

CERTIFIED PRACTISING ACCOUNTANTS

SOUTHERN EDGE ARTS INCORPORATED SPECIAL PURPOSE FINANCIAL REPORT FOR THE YEAR ENDED 31 DECEMBER 2021

COMMITTEE OF MANAGEMENT REPORT

Our committee submits the financial report of the Southern Edge Arts Incorporated for the year ended 31 December 2021.

Committee of Management Members

The names of the committee members throughout the year and at the date of this report are:

Natalie Reeves - Chairperson	Ian Marshall – Vice Chairperson
Sofie Lines - Secretary	Linda Taylor – Treasurer
Annette Stewart	Clair Trainor
Jasmine Reeves – Young Representative	

Principal Activities

The Southern Edge Arts Incorporated objects are to :

- a) Champion Creativity and Quality Arts Practice.
- b) Develop Art Forms.
- c) Build Community and Encourage Diversity

Southern Edge Arts (SEA) Inc is a membership based youth performance organisation that provides skills development to its members through workshops and projects led by professional artists. We seek to encourage the expression of imagination and use the performing arts to add value to community events and gatherings through our community projects. We offer a large workshop program that includes a variety of performing arts and each year develop a number of performance projects that bring members and professional artists together to make quality productions drawing on the skills and interests of both.

Significant Changes

No significant changes in the nature of these activities occurred during the year.

Operating Results

	Year ended 31 December 2021	Year ended 31 December 2020
	\$	\$
The operating result was a surplus / (deficit) for the period of	(1,388)	44,790

Signed in accordance with a resolution of the committee

Natalie Reeves
Chairperson

Ian Marshall
Vice Chairperson

Dated this 23rd day of June 2022



MACLEOD CORPORATION PTY LTD.
A.B.N. 25 082 636 968
Unit 8, 76 Proudlove Parade
ALBANY WA 6330
PO Box 5779
ALBANY WA 6332
ph 08 9841 2118
m. 0412 375 667
e. paul@macleodcpa.com.au
www.macleodcpa.com.au

SOUTHERN EDGE ARTS INCORPORATED SPECIAL PURPOSE FINANCIAL REPORT FOR THE YEAR ENDED 31 DECEMBER 2021

COMMITTEE OF MANAGEMENT REPORT

Our committee submits the financial report of the Southern Edge Arts Incorporated for the year ended 31 December 2021.

Committee of Management Members

The names of the committee members throughout the year and at the date of this report are:

Natalie Reeves - Chairperson	Ian Marshall – Vice Chairperson
Sofie Lines - Secretary	Linda Taylor – Treasurer
Annette Stewart	Clair Trainor
Jasmine Reeves – Young Representative	

Principal Activities

The Southern Edge Arts Incorporated objects are to :

- a) Champion Creativity and Quality Arts Practice.
- b) Develop Art Forms.
- c) Build Community and Encourage Diversity

Southern Edge Arts (SEA) Inc is a membership based youth performance organisation that provides skills development to its members through workshops and projects led by professional artists. We seek to encourage the expression of imagination and use the performing arts to add value to community events and gatherings through our community projects. We offer a large workshop program that includes a variety of performing arts and each year develop a number of performance projects that bring members and professional artists together to make quality productions drawing on the skills and interests of both.

Significant Changes

No significant changes in the nature of these activities occurred during the year.

Operating Results

	Year ended 31 December 2021	Year ended 31 December 2020
	\$	\$
The operating result was a surplus / (deficit) for the period of	(1,388)	44,790

Signed in accordance with a resolution of the committee

Natalie Reeves
Chairperson

Ian Marshall
Vice Chairperson

Dated this 23rd day of June 2022

17th June 2022

The Committee of Management
Southern Edge Arts Incorporated
PO Box 1367
ALBANY WA 6331

By Email Only

Dear Committee,

AUDITOR'S INDEPENDENCE DECLARATION
Pursuant to Section 60.40 of the
Australian Charities and Not For Profits Commission Act 2012.

In relation to the audit for the year ended 31 December 2021, I declare that, to the best of my knowledge and belief, there have been no contraventions of the audit independence requirements of:

1. The Australian Charities and Not For Profits Commission Act 2012, or
2. The Accounting Professional and Ethical Standards Board.
3. Any applicable code of professional conduct.

Yours sincerely,

Paul Gilbert FCPA MBA
Macleod Corporation Pty Ltd



MACLEOD CORPORATION PTY LTD.

A.B.N. 25 082 636 968
Unit 8, 76 Proudlove Parade
ALBANY WA 6330
PO Box 5779
ALBANY WA 6332
ph 08 9841 2118
m. 0412 375 667
e. paul@macleodcpa.com.au
www.macleodcpa.com.au

CERTIFIED PRACTISING ACCOUNTANTS



LIABILITY LIMITED BY A SCHEME APPROVED UNDER PROFESSIONAL STANDARDS LEGISLATION
Macleod Corporation Pty Ltd is a CPA practice

**SOUTHERN EDGE ARTS INCORPORATED
SPECIAL PURPOSE FINANCIAL REPORT
FOR THE YEAR ENDED 31 DECEMBER 2021**

RESPONSIBLE PERSONS DECLARATION

The responsible persons declare that in their opinion:

- i) This financial report has been prepared as a special purpose financial report on the basis that Southern Edge Arts Incorporated is a non-reporting entity because there are no users of this financial report, who would otherwise be dependent on general purpose financial reports to satisfy all of their information needs.
- ii) The Special Purpose Financial Report presents fairly the financial position of Southern Edge Arts Incorporated as at 31 December 2021 and the income and expenditure for the year then ended in accordance with the accounting policies described in the notes to the Special Purpose Financial Report.
- iii) There are reasonable grounds to believe that Southern Edge Arts Incorporated, will be able to pay all of its debts, as and when they become due and payable.
- iv) The financial report and notes satisfy the requirements of the Australian Charities and Not-for-profit Commission Regulation 2013.

Signed in accordance with subsection 60.15(2) of the Australian Charities and Not-for-profit Commission Regulation 2013.

Natalie Reeves
Chairperson

Date: 23rd day of June 2022

Ian Marshall
Vice Chairperson

Date: 23rd day of June 2022

Auditor's Responsibilities for the Audit of the Financial Report

Our objectives are to obtain reasonable assurance about whether the financial report as a whole is free from material misstatement, whether due to fraud or error, and to issue an auditor's report that includes our opinion. Reasonable assurance is a high level of assurance but is not a guarantee that an audit conducted in accordance with the Australian Auditing Standards will always detect a material misstatement when it exists. Misstatements can arise from fraud or error and are considered material if, individually or in the aggregate, they could reasonably be expected to influence the economic decisions of users taken on the basis of the financial report.

As part of an audit in accordance with Australian Auditing Standards, we exercise professional judgement and maintain professional scepticism throughout the audit. We also:

- Identify and assess the risks of material misstatement of the financial report, whether due to fraud or error, design and perform audit procedures responsive to those risks, and obtain audit evidence that is sufficient and appropriate to provide a basis for our opinion. The risk of not detecting a material misstatement resulting from fraud is higher than for one resulting from error, as fraud may involve collusion, forgery, intentional omissions, misrepresentations, or the override of internal control.
- Obtain an understanding of internal control relevant to the audit in order to design audit procedures that are appropriate in the circumstances, but not for the purpose of expressing an opinion on the effectiveness of the Centre's internal control.
- Evaluate the appropriateness of accounting policies used and the reasonableness of accounting estimates and related disclosures made by management.
- Conclude on the appropriateness of Centre's use of the going concern basis of accounting and, based on the audit evidence obtained, whether a material uncertainty exists related to events or conditions that may cast significant doubt on the Centre's ability to continue as a going concern. If we conclude that a material uncertainty exists, we are required to draw attention in our auditor's report to the related disclosures in the financial report or, if such disclosures are inadequate, to modify our opinion. Our conclusions are based on the audit evidence obtained up to the date of our auditor's report. However, future events or conditions may cause the Centre to cease to continue as a going concern.
- Evaluate the overall presentation, structure and content of the financial report, including the disclosures, and whether the financial report represents the underlying transactions and events in a manner that achieves fair presentation.

We communicate with Management regarding, among other matters, the planned scope and timing of the audit and significant audit findings, including any significant deficiencies in internal control that we identify during our audit.

Report on Other Legal and Regulatory Requirements

In accordance with the requirements of section 60-30 of the ACNC Act. We are satisfied that:

- a) we have received all information, explanation and assistance necessary for the conduct of the audit.
- b) management has kept financial records sufficient to enable a special purpose financial report to be prepared and audited.
- c) management has kept other records as required by the ACNC Act.



Paul Gilbert FCPA MBA
Macleod Corporation Pty Ltd

Dated this 23rd day of June 2022



LIABILITY LIMITED BY A SCHEME APPROVED UNDER PROFESSIONAL STANDARDS LEGISLATION
Macleod Corporation Pty Ltd is a CPA practice

CERTIFIED PRACTISING ACCOUNTANTS

INDEPENDENT AUDITOR'S REPORT

To: The Members of Southern Edge Arts Incorporated.

Report on the Financial Report

We have audited the accompanying financial report of Southern Edge Arts Incorporated, which comprises the Statement of Financial Position as at 31 December 2021, the Statement of Comprehensive Income, Statement of Changes in Equity, Statement of Cash Flows for the year then ended and notes comprising a summary of significant accounting policies, other explanatory information, and the statement by committee members.

In our opinion the financial report of Southern Edge Arts Incorporated has been prepared in accordance with Division 60 of the Australian Charities and Not-for-Profits Commission (ACNC) Act 2012, including:

- (a) giving a true and fair view of the Centre's financial position as at 31 December 2021, and of its financial performance for the year then ended; and
- (b) complying with Australian Accounting Standards, and Division 60 of the Australian Charities and Not-for-profits Commission Regulation 2013.

Basis of Opinion

We conducted our audit in accordance with Australian Auditing Standards. Our responsibilities under those standards are further described in the Auditor's Responsibilities for the Audit of the Financial Report section of our report. We are independent of the Centre in accordance with the ethical requirements of the Accounting Professional and Ethical Standards Board's APES 110 Code of Ethics for Professional Accountants (the Code) that are relevant to our audit of the financial report in Australia. We have also fulfilled our other ethical responsibilities in accordance with the Code.

We believe that the audit evidence we have obtained is sufficient and appropriate to provide a basis for our opinion.

Emphasis of Matter - Basis of Accounting

We draw attention to Note 1 to the financial report, which describes the basis of accounting. The financial report has been prepared for the purpose of fulfilling the Centre's financial reporting responsibilities under the Constitution and the Australian Charities and Not for Profits Commission Act, 2012. As a result, the financial report may not be suitable for another purpose. Our opinion is not modified in respect of this matter.

Emphasis of Matter - Cash Receipts

As is common for organisations of this type, it is not practicable for Southern Edge Arts Incorporated to maintain an effective system of internal control over monies received, until their initial entry in the accounting records. Accordingly, our audit in relation to this income was limited to amounts that have been recorded in the accounting records. Our opinion is not modified in respect of this matter.

Responsibility of the Management for the Financial Report

Management of the Centre are responsible for the preparation of the financial report that gives a true and fair view in accordance with the requirements of Australian Accounting Standards, the ACNC Act and the needs of the members. Management's responsibility also includes such internal control as management determine is necessary to enable the preparation of a financial report that gives a true and fair view and is free from material misstatement, whether due to fraud or error.

In preparing the financial report, management are responsible for assessing the Centre's ability to continue as a going concern, disclosing, as applicable, matters relating to going concern and using the going concern basis of accounting unless management either intend to liquidate the Centre or to cease operations, or have no realistic alternative but to do so.

Management are responsible for overseeing the Centre's financial reporting process.



LIABILITY LIMITED BY A SCHEME APPROVED UNDER PROFESSIONAL STANDARDS LEGISLATION
Macleod Corporation Pty Ltd is a CPA practice

CERTIFIED PRACTISING ACCOUNTANTS

**SOUTHERN EDGE ARTS INCORPORATED.
STATEMENT OF COMPREHENSIVE INCOME
FOR THE YEAR ENDED 31 DECEMBER 2021**

	Note	2021 \$	2020 \$
INCOME			
Grants & Sponsorship	2,7	244,599	83,079
Income from Activities	3	100,393	55,728
Donations		645	749
Interest		26	42
Membership Fees		1,132	1,412
COVID-19 Subsidies		13,950	144,258
		<u>360,745</u>	<u>285,268</u>
EXPENDITURE			
Advertising & Marketing		1,692	616
Bad Debts Written Off		182	1,129
Bank Fees		705	512
Depreciation	6 a)	6,499	8,101
Insurance		8,302	7,808
Legal Finance Governance		1,500	2,300
Office Administration		3,468	3,331
Postage, Printing, Stationery & Office Supplies		2,885	763
Production / Technical Artists		1,452	770
Rent & Running Costs		3,589	6,280
Scenic / Staging Materials		23,140	3,312
Staff Travel Expenses		3,312	156
Subcontractors		66,291	4,703
Superannuation		18,870	13,634
Travel & Freight		0	411
Wages - Creative Artists		92,378	93,393
Wages - Management / Administration		127,868	93,259
		<u>362,133</u>	<u>240,478</u>
Operating Result Surplus/(Loss)	11	(1,388)	44,790

SOUTHERN EDGE ARTS INCORPORATED.
STATEMENT OF FINANCIAL POSITION
AS AT 31 DECEMBER 2021

	Note	2021 \$	2020 \$
CURRENT ASSETS			
Cash at Bank	4	181,373	259,494
Accounts Receivable	5	5,935	1,260
TOTAL CURRENT ASSETS		187,308	260,754
NON CURRENT ASSETS			
Plant & Equipment	6	30,791	37,290
TOTAL NON CURRENT ASSETS		30,791	37,290
TOTAL ASSETS		218,099	298,044
CURRENT LIABILITIES			
Trade Creditors		702	1,334
Unexpended Grants	7	41,391	113,927
Other Accounts Payable	8	12,331	24,993
Provision for Employee Entitlements	9	20,302	12,448
TOTAL CURRENT LIABILITIES		74,726	152,702
NON CURRENT LIABILITIES			
Provision for Employee Entitlements	9	0	0
TOTAL NON CURRENT LIABILITIES		0	0
TOTAL LIABILITIES		74,726	152,702
NET ASSETS		143,373	145,342
Represented by:			
EQUITY			
Accumulated Surplus		133,560	135,527
Asset Revaluation Reserve		9,813	9,813
TOTAL EQUITY		143,373	145,340

SOUTHERN EDGE ARTS INCORPORATED.
STATEMENT OF CASH FLOWS
FOR THE YEAR ENDED 31 DECEMBER 2021

	Note	2021 \$	2020 \$
CASH FLOWS FROM OPERATING ACTIVITIES			
<u>Receipts –</u>			
- Grants & Sponsorship		172,063	197,006
- Project Income		95,718	56,010
- Donations		645	749
- Interest		26	42
- Membership		1,132	1,412
- COVID-19 Subsidies (Jobkeeper & CFB)		13,950	160,201
<u>Payments</u>			
- Project Expenses		(29,596)	(5,265)
- Employees		(231,262)	(200,286)
- Services and charges		(100,797)	(26,826)
Net Cash flows from / (used in) Operating Activities	11	(78,121)	183,043
CASH FLOWS FROM INVESTING ACTIVITIES			
Proceeds from sale of property, plant & equipment		0	0
Purchase of Property, Plant & Equipment		0	0
Net Cash flows used in Investing Activities		0	0
CASH FLOWS FROM FINANCING ACTIVITIES			
Proceeds from Loans		0	0
Capital Grants		0	0
Net Cash flows used in Financing Activities		0	0
NET INCREASE/(DECREASE) IN CASH HELD		(78,121)	183,043
Add: Opening Cash Balance Forward	4	259,494	76,451
CLOSING CASH CARRIED FORWARD	4	181,373	259,494

SOUTHERN EDGE ARTS INCORPORATED.
STATEMENT OF CHANGES IN EQUITY
FOR THE YEAR ENDED 31 DECEMBER 2021

	Note	2021 \$	2020 \$
EQUITY			
<u>Accumulated Surplus</u>			
Balance as at the beginning of period		135,527	83,258
Prior period adjustment		(579)	7,479
Net result for the period		(1,388)	44,790
Balance as at the end of period		133,560	135,527
<u>Asset Revaluation Reserve</u>			
Balance as at the beginning of the period		9,813	9,813
Revaluations of Non- Current Assets		0	0
Revaluation Movement		0	0
Balance as at the end of the period		9,813	9,813
TOTAL EQUITY		143,373	145,340

SOUTHERN EDGE ARTS INCORPORATED
NOTES TO AND FORMING PART OF THE FINANCIAL STATEMENTS
FOR YEAR ENDED 31 DECEMBER 2021

NOTE 1 – STATEMENT OF ACCOUNTING POLICIES

The Committee of Management have prepared the financial statements on the basis that the entity is a non-reporting entity because there are no users dependent on general purpose financial reports. This financial report is therefore a special purpose financial report that has been prepared to meet Committee of Management's financial reporting requirements under the Southern Edge Arts Incorporated constitution.

The financial report has been prepared in accordance with the significant accounting policies disclosed below, which the Committee of Management have determined are appropriate to meet the needs of the members. Such accounting policies are consistent with the previous period unless stated otherwise.

The financial report has been prepared in accordance with the requirements of the Associations Incorporation Act, 2015 of Western Australia and the following Australian Accounting Standards:

AASB 101, Presentation of Financial Statements
AASB 107, Statement of Cash Flows
AASB 108, Accounting Policies, Changes in accounting Estimates and Errors
AASB 1031, Materiality
AASB 1048, Interpretation of Standards
AASB 1054, Australian Additional Disclosures.

No other applicable Accounting Standards, Australian Accounting Interpretations or other authoritative pronouncements of the Australian Accounting Standards Board have been applied.

The financial report has been prepared on a modified accrual basis of accounting including the historical cost convention and the going concern assumption.

The following material accounting policies, which are consistent with the previous periods unless otherwise stated, have been adopted in the preparation of the financial report:

a) Income Tax
Charitable Institution
The Australian Charities and Not-for-Profits Commission has registered the Association as a Charitable Institution. Consequently the Australian Taxation office has endorsed the Association and it is eligible for the following concessions:

- (i) GST concession;
- (ii) FBT Exemption;
- (iii) Income taxation exemption.

No change in its tax status as a result of activities undertaken during the year is likely.

SOUTHERN EDGE ARTS INCORPORATED
NOTES TO AND FORMING PART OF THE FINANCIAL STATEMENTS
FOR YEAR ENDED 31 DECEMBER 2021

- b) Cash and Cash Equivalents**
Cash and cash equivalents includes cash on hand, deposits held at call with banks, and other short-term highly liquid investments with original maturities of three months or less. Bank overdrafts are shown within short-term borrowings in current liabilities on the statement of financial position.
- c) Inventories**
Inventories held for resale have been valued at the lower of cost and net realisable value.
- d) Investments**
Investments comprise available-for-sale financial assets designated as available-for-sale but which are not deemed to be held principally for trading purposes, and include equity investments. Investments are initially recognised at fair value plus transaction costs. Subsequent gains or losses arising from changes in fair value are included as a separate component of equity in the available-for sale revaluation reserve except for interest, dividends and foreign exchange gains and losses on monetary assets, which are recognised directly in the income statement. When the investment is sold, the cumulative gain or loss relating to the investment is transferred from the available-for-sale revaluation reserve to the income statement.
- e) Property, Plant and Equipment (PPE)**
Plant and equipment including leasehold improvements are measured on the cost basis less depreciation and any impairment losses.
- Impairment losses, in accordance with Accounting Standard AASB 136 "Impairment of Assets" is the amount by which the carrying amount of an asset or a cash-generating unit exceeds its recoverable amount. The recoverable amount of an asset is the higher of its fair value less costs to sell and its value in use. Fair value less costs to sell is the amount obtainable from the sale of an asset in an arm's length transaction between knowledgeable, willing parties, less the costs of disposal.
- Right of use assets where a lessee is granted the right to use an asset over the life of the asset have not been brought to account in accordance with AASB16 "Leases"
- Materiality**
Assets with an economic life in excess of one year are only capitalised where the cost of acquisition exceeds materiality threshold of \$ 500.
- Depreciation**
The depreciable amount of plant and equipment is depreciated on a diminishing value and straight line basis over the asset's useful life to the entity commencing from the time the asset is held ready for use. Leasehold improvements are depreciated over the shorter of either the unexpired period of the lease or the estimated useful lives of the improvements.

The depreciation rates used for each class of depreciable assets are:

Class of Fixed Asset	Depreciation Rate
Leasehold Improvements	n/a
Plant & Equipment	15-30%
Office Furniture & Equipment	n/a

SOUTHERN EDGE ARTS INCORPORATED
NOTES TO AND FORMING PART OF THE FINANCIAL STATEMENTS
FOR YEAR ENDED 31 DECEMBER 2021

f) Employee Benefits
Provision is made for the Centre's liability for employee benefits arising from services rendered by employees to the end of the reporting period. Employee benefits have been measured at the amounts expected to be paid when the liability is settled.

g) Provisions
Provisions are recognised when the association has a legal or constructive obligation, as a result of past events, for which it is probable that an outflow of economic benefits will result, and that outflow can be reliably measured. Provisions are measured at the best estimate of the amounts required to settle the obligation at the end of the reporting period.

h) Revenue and Other Income
Non-reciprocal grant revenue is recognised in profit or loss when the entity obtains control of the grant and it is probable that the economic benefits gained from the grant will flow to the entity and the amount of the grant can be measured reliably.

When grant revenue is received whereby the entity incurs an obligation to deliver economic value directly back to the contributor, this is considered a reciprocal transaction and the grant revenue is recognised in the statement of financial position as a liability until the service has been delivered to the contributor, otherwise the grant is recognised as income on receipt.

Donations and bequests are recognised as revenue when received.
Interest revenue is recognised as it accrues using the effective interest method, which for floating rate financial assets is the rate inherent in the instrument.
Dividends are recognised as revenue when received.
Revenue from the rendering of a service is recognised upon the delivery of the service to the customers.
The fair value of volunteer services contributed has not been recognised in accordance with AASB 1058 "Income of Not for Profit Entities". As a consequence no volunteer labour expense and correspondingly no volunteer income has been brought to account.

i) Goods and Services Tax (GST)
Revenues, expenses and assets are recognised net of the amount of GST, except where the amount of GST incurred is not recoverable from the Tax Office. In these circumstances, the GST is recognised as part of the cost of acquisition of the asset or as part of an item of the expense. Receivables and payables in the assets and liabilities statement are shown inclusive of GST.

j) Going Concern & Economic Dependency
The accounts have been prepared on a going concern basis. The ability of the centre to continue as a going concern is dependent upon continued support from the local community and government agencies. At the date of this report the committee have no reason to believe that local community and government agencies will not continue to fund the operations of the Centre.

k) Comparatives
Comparative figures for the previous year have been reclassified to conform to the new format financial report.

NOTES TO AND FORMING PART OF THE FINANCIAL STATEMENTS
FOR YEAR ENDED 31 DECEMBER 2021

Note	2021 \$	2020 \$		
6 PROPERTY PLANT & EQUIPMENT				
Plant & Equipment At Cost	150,207	150,207		
Less Accumulated Depreciation	(119,416)	(112,917)		
Total Property Plant & Equipment	30,791	37,290		
	Plant & Equipment	Total		
6 a) Movement in Carrying Amounts				
Balance 1 January 2020	45,391	45,391		
Additions	0	0		
Disposals	0	0		
Depreciation	(8,101)	(8,101)		
Balance 31 December 2020	37,290	37,290		
Additions	0	0		
Disposals	0	0		
Depreciation	(6,499)	(6,499)		
Balance 31 December 2021	30,791	30,791		
6 b)				
The Southern Edge Arts Incorporated has offices located on property and in buildings owned by the PCYC. A lease has been entered into with the PCYC. Leasehold improvements should be depreciated over the term of the lease agreement. The (fair) market value of the lease has not been determined, no right of use asset has been recognised (AASB 16 & 1058) no revenue recognised (AASB15) and neither has lease liability recognised (AASB16).				
7 MOVEMENT IN UNEXPENDED GRANTS				
Funding Agency	Beginning of Year	Received	Expended	End of Year
Healthway	0	75,000	75,000	0
DLGSCI WA	94,043	66,504	119,156	41,391
DLGSCI WA New Works "On the Edge"	0	12,049	12,049	0
Regional Arts WA Sector Investment Funding	17,500	17,500	35,000	0
Regional Arts WA – Drug Aware	2,384	0	2,384	0
Regional Arts WA – Artlands	0	1,000	1,000	0
	113,927	172,053	244,589	41,391

Unexpended Grants are those grants which have conditions attached which must be satisfied before it is able to be recognised as grant income. The Unexpended portion of the grant represents revenue which has been deferred until those conditions are satisfied. (i.e. the grant funds have been expended in accordance with the applicable funding agreement).

SOUTHERN EDGE ARTS INCORPORATED
NOTES TO AND FORMING PART OF THE FINANCIAL STATEMENTS
FOR YEAR ENDED 31 DECEMBER 2021

Note	2021 \$	2020 \$
2 GRANTS & SPONSORSHIP		
Healthway	75,000	75,000
Regional Arts WA – Drug Aware	2,384	1,616
WA Theatre Development Initiative	24,418	1,533
City of Albany	0	4,930
Dept Local Government, Sport & Cultural Industries	12,049	0
Regional Arts WA – Regional Arts Sector Investment	35,000	0
Regional Arts WA – Artlands 2021	1,000	0
Other Grant Accruals	94,748	0
	244,599	83,079
3 INCOME FROM ACTIVITIES		
Participants Workshops	75,214	47,928
School Holiday Workshops	2,190	2,295
Community Events	3,023	3,455
Outreach	4,414	2,050
Box Office	15,552	0
	100,393	55,728
4 CASH AT BANK		
Petty Cash	35	35
Operating Account	69,906	148,848
Cash Management Account	100,045	100,035
Public Donations Fund	11,387	10,576
	181,373	259,494
5 RECEIVABLES		
Trade Debtors	5,935	1,260
Doubtful Debtors	0	0
	5,935	1,260

SOUTHERN EDGE ARTS INCORPORATED
NOTES TO AND FORMING PART OF THE FINANCIAL STATEMENTS
FOR YEAR ENDED 31 DECEMBER 2021

Note	2021 \$	2020 \$
8 OTHER ACCOUNTS PAYABLE		
Credit Card	989	635
Goods and Services Tax	2,282	17,189
PAYG Withholding	2,243	2,183
Superannuation	6,817	4,986
	12,331	24,993
9 EMPLOYEE ENTITLEMENTS		
Provision for Annual Leave	10,517	6,313
Provision for Personal Leave	9,785	6,135
	20,302	12,448
Current	20,302	12,448
Non Current	0	0
	20,302	12,448
10 RELATED PARTY TRANSACTIONS		
Members of the Committee may have entered into transactions with Southern Edge Arts Incorporated. All transactions with related parties have been conducted on an arms length basis and on terms and conditions, that are no more favourable than those available to non-related parties.		
11 RECONCILIATION OF PROFIT FOR THE YEAR TO NET CASHFLOWS FROM OPERATING ACTIVITIES		
Surplus/(Loss) from Operating Activities	(1,388)	44,790
Non-cash flows in profit:		
Depreciation & Amortisation	6,499	8,101
Changes in assets and liabilities, net effects of:		
-(Increase)/Decrease in receivables	(4,675)	282
- Increase/(Decrease) in creditors	(632)	1,334
- Increase/(Decrease) in payables	(13,243)	14,609
- Increase/(Decrease) in Unexpended Grants	(72,536)	113,927
- Increase/(Decrease) in provisions	7,854	0
Net Cashflow from / used in Operating Activities	(78,121)	183,043



Southern Edge Arts Inc

77 Sanford Road | PO Box 1367 | Albany WA 6330
T: (08) 9841 6002 | W: www.southernedge.org.au



Keeping mentally healthy is as important as staying physically healthy, and it's as easy as A-B-C, Act-Belong-Commit

www.actbelongcommit.org.au



Mentally Healthy WA